



Brightly TheWorxHub Solution Overview

All-in-one CMMS, compliance and rounding solution

Today, compliance is top of mind—and being compliance-ready is a daily expectation of healthcare professionals. Achieving and maintaining compliance in healthcare is complex; With all the minute tasks, overwhelming number of codes, and intricate requirements, compliance can be one of the most difficult parts of a facilities director's job.

Designed specifically for healthcare, Brightly TheWorxHub™ is the most user-friendly, cloud-based computerized maintenance management system (CMMS) today, combining asset management, compliance readiness and safety into one modern solution.



Key Benefits



Stay organized

Easily centralize and access current and historical information with critical asset management and compliance-tracking tasks, ensuring teams stay organized.



Streamline operations and communications

Easily update service requests and automate work orders at any time regardless of location, enabling teams to streamline their day-to-day operations and communications.



Reduce costs

Easily view real-time data and analysis on risky and high-value assets, empowering your teams to save money and shift away from reactionary repairs to preventive maintenance.

Key Features



Built-in, up-to-date compliance standards for The Joint Commission and DNV



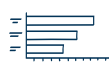
Pre-built deficiency-specific dashboards for generating automated work orders and notifications



On-the-go mobile access to update service requests and inspection requirements, anytime, anywhere

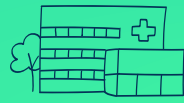


Pre-built risk assessment frameworks and dashboards to track riskiest assets



Real-time data and analysis with built-in reports and pre-defined KPI dashboards

**Trusted by
today's leading
healthcare
organizations**



2,000+
healthcare partnerships



70,000+
monthly users



9,000,000+
work orders completed

TheWorxHub: Features and Functionality

Workflow Management and Preventive Maintenance

- Schedule, manage and automate location- and asset-based work orders
- Schedule preventive maintenance (PM) work orders on high-value assets
- Synchronize asset management across departments, such as biomed and facilities
- Gain visibility to assets requiring safety inspections

Mobile Capabilities

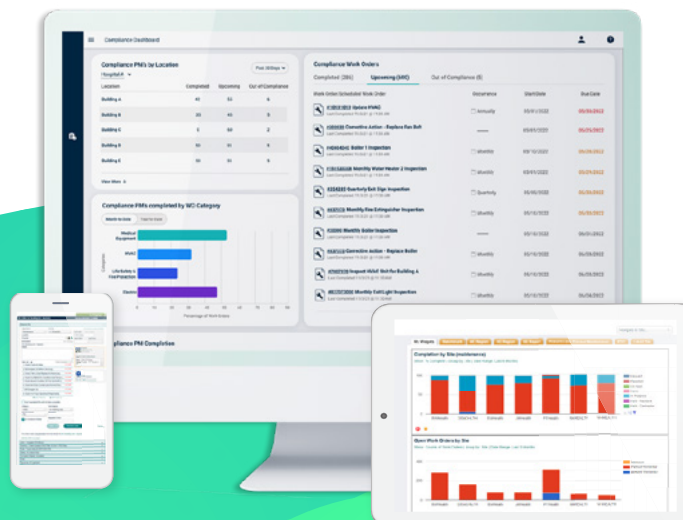
- Create, edit, prioritize and complete work orders on the go
- Update service requests and inspection requirements
- Record accurate labor requirements with mobile work timer
- Track inventory with mobile barcode scanning

Compliance & Environment of Care Rounding

- Track compliance-related tasks with access to up-to-date compliance standards
- Generate automatic work orders and deficiency notifications with deficiency-specific dashboards
- Access pre-built risk assessment frameworks and dashboards for riskiest asset tracking
- Simplify work with pre-built environment of care rounding templates

Reporting & Analysis

- Customize reports, data output with dynamic BI visualization tools
- Access, download and easily share pre-built reports and predefined dashboards with KPIs
- Track budgets based on historical data and projections
- Accessible anytime, anywhere via web browser or any mobile device



Technical Requirements

For optimal performance, TheWorxHub requires the latest version for all browsers and operating systems. Please consult with your IT department to ensure all systems are up to date.

Internet Browsers

Google Chrome, Microsoft Edge, Mozilla Firefox, Opera and Safari (Mac OS)

Mobile OS

- Android 10.0+, iOS 12.0+
- Minimum screen size of 4 inches

Barcode Scanners & Cameras

- Bluetooth barcode scanners require support for 2D barcodes if using QR codes
- Camera-based scanning requires rear-facing camera

Display Resolution

Desktop displays should be a minimum of 1024x768

Integrations

TheWorxHub seamlessly integrates with popular applications, enabling your teams a 360-degree view of your operations.

Common integrations include: Visual Touch, Facility Health INC, Collaborative WE, Trane, Zurn, PlumbSmart, Schneider Electric, YouBIM, ServiceNow



TheWorxHub - What we Offer

We offer a comprehensive solution to meet all your environment of care and compliance needs. Subscriptions are annual contracts, with options for multi-year pricing. TheWorxHub expands as your needs expand, with additional modules to maximize the power of the solution.

	Core Package	Professional Package	
Cloud-based Solution	✓	✓	Add-on Modules <ul style="list-style-type: none"> • Capital Planning • Facility Condition Assessments • Housekeeping • WorxIQ Services <ul style="list-style-type: none"> • IT Services: Consulting, including asset data gathering, PM set-up, and more
Mobile Functionality	✓	✓	
Single Sign-On Integration	✓	✓	
Asset Management/CMMS	✓	✓	
Compliance Tracking, EOC Rounding	✓	✓	
Reporting & Analysis	✓	✓	
Workflow Management	✓	✓	
Barcoding for Assets	✓	✓	
Surveys & Inspections	✓	✓	
Templates	✓	✓	
Space Management Module		✓	

About Brightly Software

Brightly, a Siemens company, enables organizations to transform the performance of their assets. Brightly is the global leader in intelligent asset management solutions. Brightly's sophisticated cloud-based platform leverages more than 20 years of data to deliver predictive insights that help users through the key phases of the entire asset lifecycle. More than 12,000 customers of every size worldwide depend on Brightly's complete suite of intuitive software—including CMMS, EAM, Strategic Asset Management, IoT Remote Monitoring, Sustainability and Community Engagement. Paired with award-winning training, support and consulting services, Brightly helps light the way to a bright future with smarter assets and sustainable communities. For more information, visit www.brightlysoftware.com.



A Siemens Company